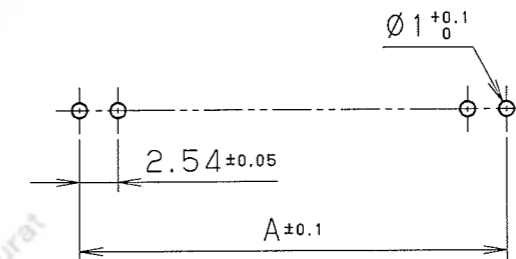
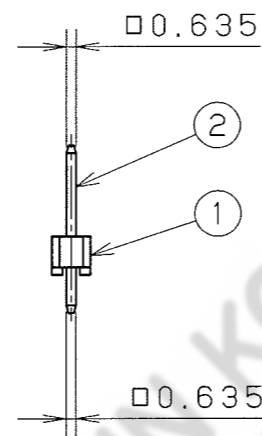
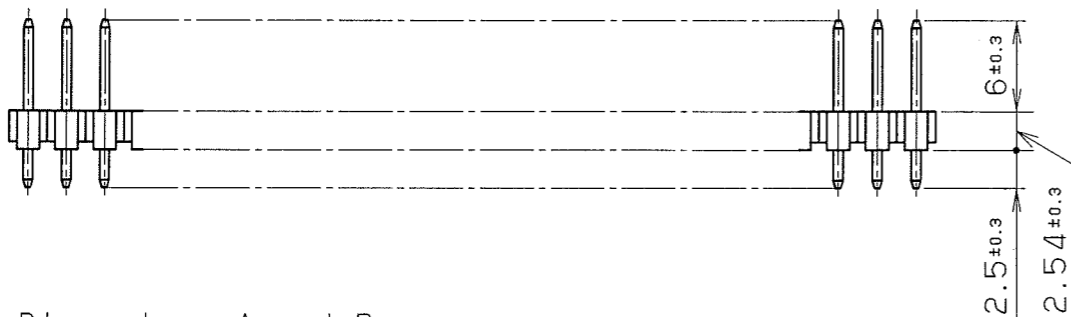


NOTE1.
PART NO.

FFC-(n) AMEP1 (*)

Insulator color
Blank:Blue
B:Black



RECOMMENDED P. C. B. LAYOUT

•Dimensions A and B

No. of contacts (n)	A	B
1	—	2.54
2	2.54	5.08
3	5.08	7.62
4	7.62	10.16
5	10.16	12.7
6	12.7	15.24
7	15.24	17.78
8	17.78	20.32
9	20.32	22.86
10	22.86	25.4
11	25.4	27.94
12	27.94	30.48
13	30.48	33.02
14	33.02	35.56
15	35.56	38.1
16	38.1	40.64
17	40.64	43.18
18	43.18	45.72
19	45.72	48.26
20	48.26	50.8
21	50.8	53.34
22	53.34	55.88
23	55.88	58.42
24	58.42	60.96
25	60.96	63.5
26	63.5	66.04

No. of contacts (n)	A	B
27	66.04	68.58
28	68.58	71.12
29	71.12	73.66
30	73.66	76.2
31	76.2	78.74
32	78.74	81.28
33	81.28	83.82
34	83.82	86.36
35	86.36	88.9
36	88.9	91.44
37	91.44	93.98
38	93.98	96.52
39	96.52	99.06
40	99.06	101.6
41	101.6	104.14
42	104.14	106.68
43	106.68	109.22
44	109.22	111.76
45	111.76	114.3
46	114.3	116.84
47	116.84	119.38
48	119.38	121.92
49	121.92	124.46
50	124.46	127
51	127	129.54
52	129.54	132.08

↑ Please contact our sales staff for pin length variation, pin plating variation, other any questions. ↓

△										
△				2	Contact	Phosphor Bronze	n	Gold 0.2μm		
△				1	Insulator	Nylon66	1		UL94V-0 Note #1	
LTR.	DATE	BY	REV.	DESCRPT	No.	PART NAME	MATERIAL	QTY	FINISH	NOTE
DATE		SCALE		UNIT		3RD. A. P		HONDA TSUSHIN KOGYO CO., LTD.		
DEC.28.2009		2/1		mm (INCH)						
APP. DATE&REV.										
DR.	DE.	CHK.	CHK.	APP.	NAME		MALE CONNECTOR (RoHS)			
T. Oda	T. Oda	K. Ono	-	M. Okamura	PART NO.		FFC-(n) AMEP1 ()			
						REV.				