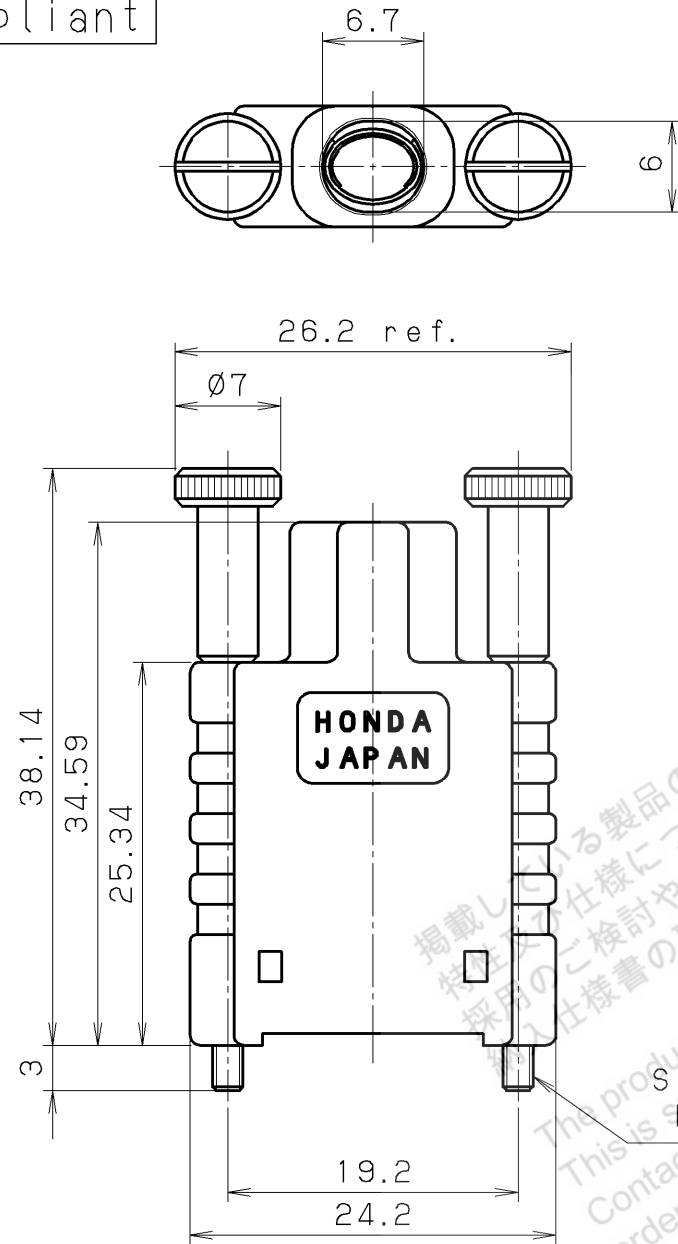
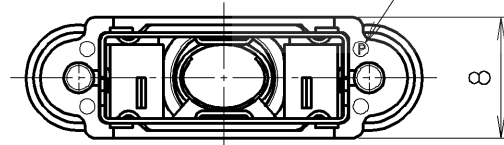


RoHS compliant



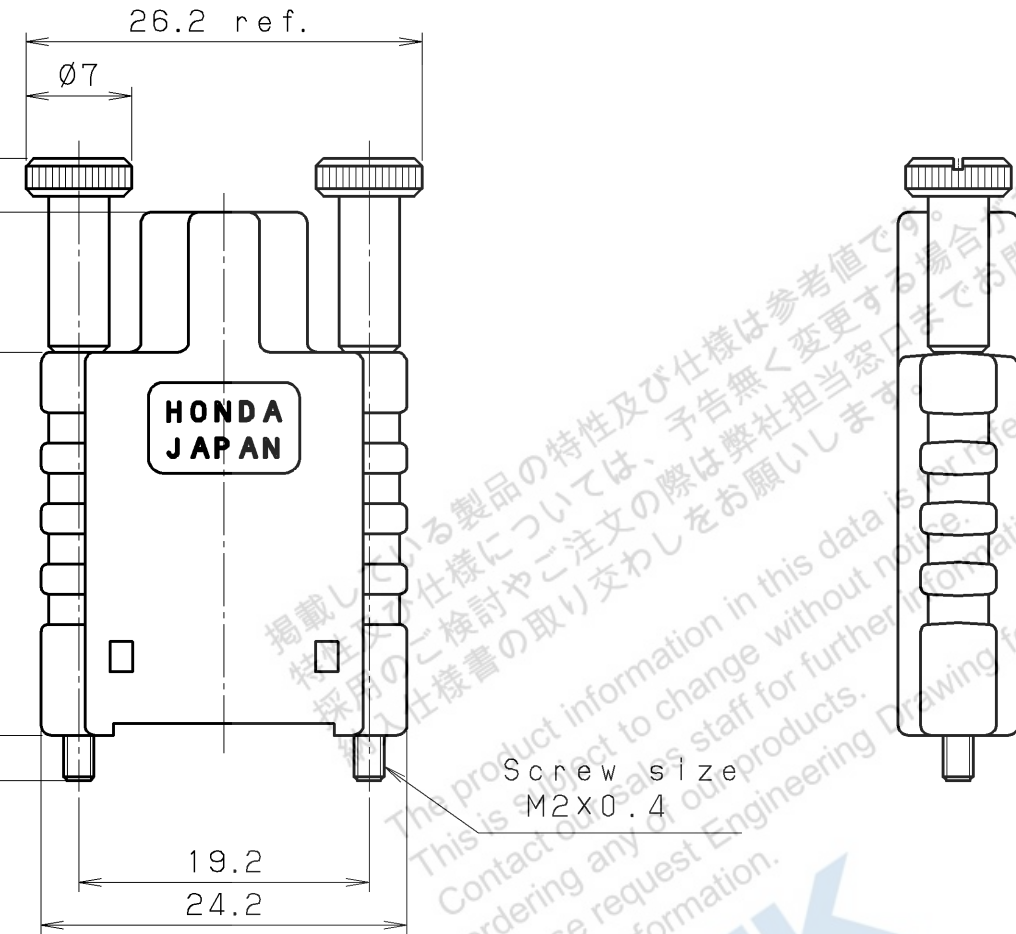
Screw size
M2X0.4

Identification mark

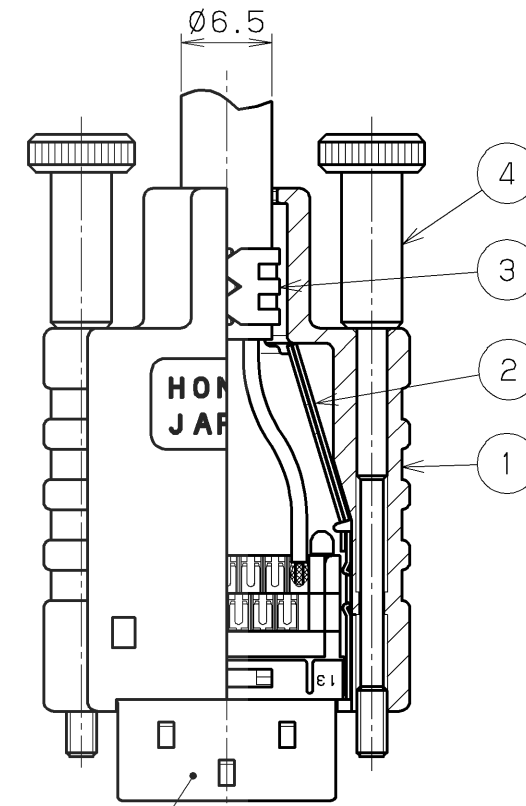


Note

1. Connector is not included in P/N: HDR-E26LPHP2+.
2. This drawing shows assembled for reference. Thumb screws are assembled to plastic cover. Inner shell A and B are supplied unassembled.



Connector (Note. #1)
HDR-E26F () G () +
HDR-E26M () G () +



After assembly drawing

LTR.	DATE	BY	REV.	DESCRIPT	No.	PART NAME	MATERIAL	QTY	FINISH	NOTE
					4	Thumb screw	Steel	2	Nickel plating	
					3	Inner shell A	Stainless steel	1	Nickel plating	
					2	Inner shell B	Stainless steel	1	Nickel plating	
	Jan. 19 2018	S. M	Revise		1	Plastic cover	PBT RESIN	1		UL94V-0 Black
DATE						SCALE	UNIT	3RD. A. P		
July. 12. 2017						2 / 1	mm (INCH)			
APP. DATE & REV.										
DR.	DE.	CHK.	CHK.	APP.	NAME		HDR-E type cable cover (RoHS)			
S. MURAKAMI	S. MURAKAMI	S. YOSHIDA	—	Y. KATO	PART NO.		HDR-E26LPHP2+ REV.			