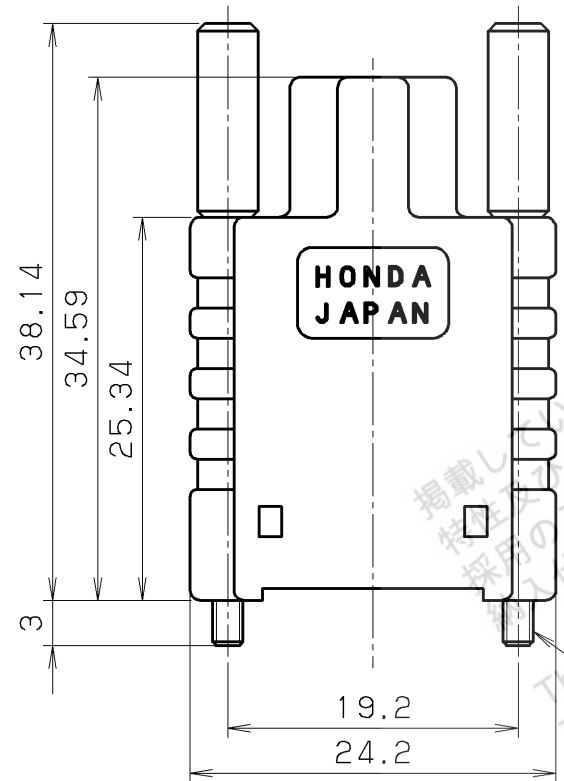
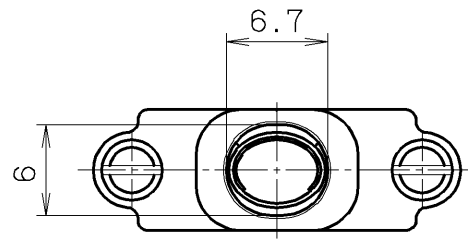
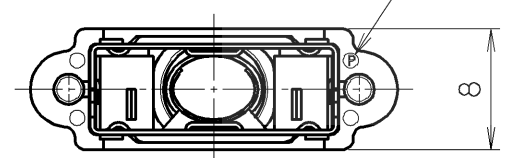


RoHS compliant



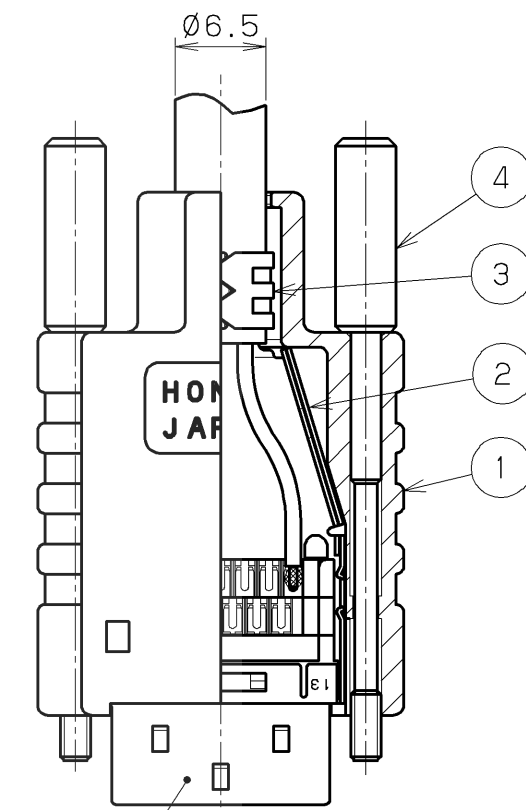
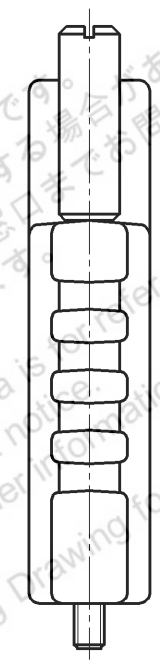
Screw size
M2x0.4

Identification mark



Note

1. Connector is not included in P/N: HDR-E26LPHP3+.
2. This drawing shows assembled for reference. Thumb screws are assembled to plastic cover. Inner shell A and B are supplied unassembled.



Connector (Note. #1)
HDR-E26F () G () +
HDR-E26M () G () +

After assembly drawing

					4	Thumb screw	Steel	2	Nickel plating	
					3	Inner shell A	Stainless steel	1	Nickel plating	
					2	Inner shell B	Stainless steel	1	Nickel plating	
	Jan.19 2018	S. M	Revise		1	Plastic cover	PBT RESIN	1		UL94V-0 black
LTR.	DATE	BY	REV.	DESCRIPT	No.	PART NAME	MATERIAL	QTY	FINISH	NOTE
	DATE		SCALE		UNIT	3RD. A. P	HTK HONDA TSUSHIN KOGYO CO., LTD.			
	July.12.2017		2/1		mm (INCH)		NAME HDR-E type cable cover (RoHS)			
	APP. DATE&REV.						PART NO. HDR-E26LPHP3+ REV.			
	DR.	DE.	CHK.	CHK.	APP.					
	S. MURAKAMI	S. MURAKAMI	S. YOSHIDA	—	Y. KATO					